

Towards certified responsible biomass

Building concrete export cases meeting responsible supply criteria

29-06-2005

YES-DC Lecture

Jan Gilhuis

Solidaridad

The Netherlands

www.solidaridad.nl



SOLIDARIDAD

Towards certified responsible biomass

Building concrete export cases meeting responsible supply criteria

I Certified Responsible Biomass

- social certification: principles & issues at stake
- a generic code for agriculture
- product specific issues

II FairBioTrade Partnership

- four steps approach

III Building export cases

- potentials
- barriers & challenges



Towards certified responsible biomass

Building concrete export cases meeting responsible supply criteria

I - Certified responsible biomass



SOLIDARIDAD

Towards certified responsible biomass

Building concrete export cases meeting responsible supply criteria

I.a Social certification. Principles

- create maximal chain transparency
- allow process auditing & external control
- promote sustainable production: efficient, decent and sound
- pay an integral price: validating & internalising real costs
- create consumer awareness

Towards certified responsible biomass

Building concrete export cases meeting responsible supply criteria

I.a Social certification. Issues at stake

- Does the case endanger local *food security*?
- Does the case compete with *local land use*, and what is the result of such competition?
- Does the case operate within responsible limits (e.g labour conditions; environment, etc)?
- Does the case contribute to direct local *income* improvement?
- Does the case contribute to limitation of *global warming*?

Towards certified responsible biomass

Building concrete export cases meeting responsible supply criteria

I.b generic code for biomass from agricultural production



Social and cultural criteria

- workers are paid according to national laws
- workers are protected by national laws and ILO conventions regarding age, working hours, pensions, working conditions, syndicates and safety
- workers receive training about safely handling chemicals in their own language
- workers receive appropriate work clothing
- access to health care for the workers and their families
- access to education for children
- access to housing with sound walls, floor, roof and a ventilated place to cook
- access to clean drinking water, showers and latrines
- freedom of cultural expression

SOLIDARIDAD

Towards certified responsible biomass

Building concrete export cases meeting responsible supply criteria

Environmental criteria



- minimize soil erosion• responsible and minimal use of agrochemicals• recording of soil history• adapting Integrated Pest Management • minimize water usage and environmental pollution• minimize energy use • optimize use of sustainable energy sources • treatment of contaminated water• protecting water sources• prohibiting deforestation of primary forests• conserving forest patches• protecting endangered species• allowing native vegetation to grow along streams• not using fertilizers or crop-protection products within 5 meters of any permanent stream

Towards certified responsible biomass

Building concrete export cases meeting responsible supply criteria

Economic criteria



- business processes monitored and managed as efficient and effective as possible • crop records up to date and available
- good housekeeping is standard practice • employees schooled and trained properly • accident and emergency procedures in place • hygiene rules and practices implemented and respected
- providing traceability to farm level • keeping all records for at least two years • yearly performed internal audits

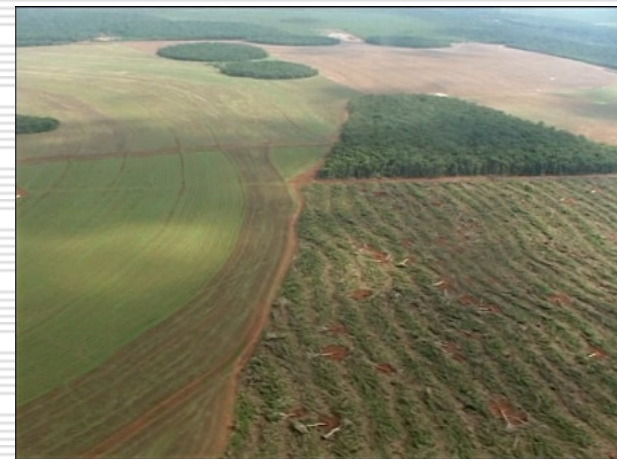
SOLIDARIDAD

Towards certified responsible biomass

Building concrete export cases meeting responsible supply criteria

I.c Product specific issues on soy beans

- no new soy in perennial crops areas, land legally cleared pre 2003
- social protection smallholders and indigenous people
- more attention to off-farm effects
- gmo's?



SOLIDARIDAD

Towards certified responsible biomass

Building concrete export cases meeting responsible supply criteria

I.c Product specific issues on coffee

- multiple smallholders problems
- shadow crops and erosion
- future market problems



Towards certified responsible biomass

Building concrete export cases meeting responsible supply criteria

I.c Product specific issues on palm oil

- land legally cleared pre 2001
- illegal workers & migrants
- no use of Paraquat
- health & safety at crushing unit



Towards certified responsible biomass

Building concrete export cases meeting responsible supply criteria

I.c Product specific issues on cotton

- living conditions pickers
- circle of financial dependency
- pesticides use



SOLIDARIDAD

Towards certified responsible biomass

Building concrete export cases meeting responsible supply criteria

II. FairBioTrade Partnership



SOLIDARIDAD

Towards certified responsible biomass

Building concrete export cases meeting responsible supply criteria

II. Partners



Universiteit Utrecht

Solidaridad
méér dan hulp!



SOLIDARIDAD

Towards certified responsible biomass

Building concrete export cases meeting responsible supply criteria

II. Four steps

- Identifying potentials and criteria for certification
- Building concrete export cases
- Campaigning
- Lobby

Towards certified responsible biomass

Building concrete export cases meeting responsible supply criteria

III. Building export cases

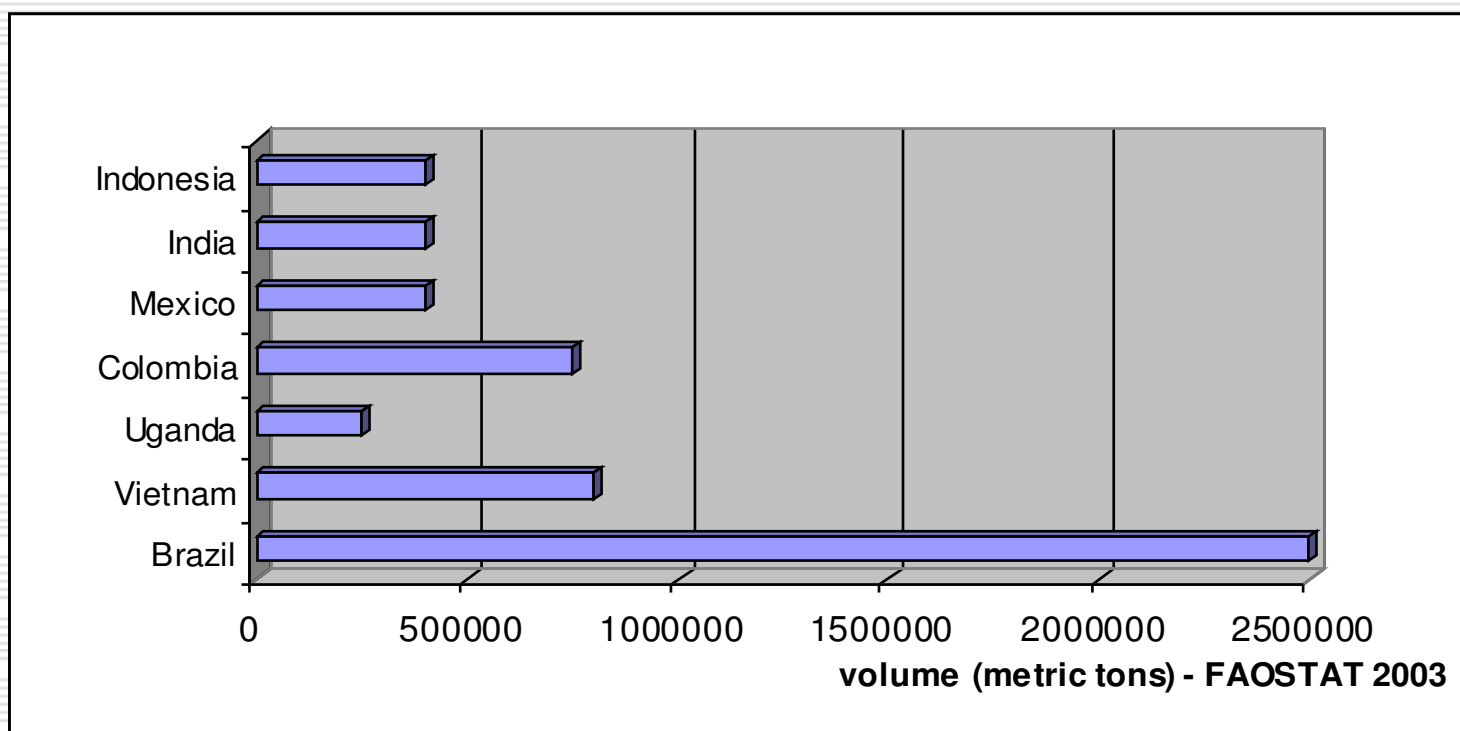


SOLIDARIDAD

Towards certified responsible biomass

Building concrete export cases meeting responsible supply criteria

III.a Coffee Husk

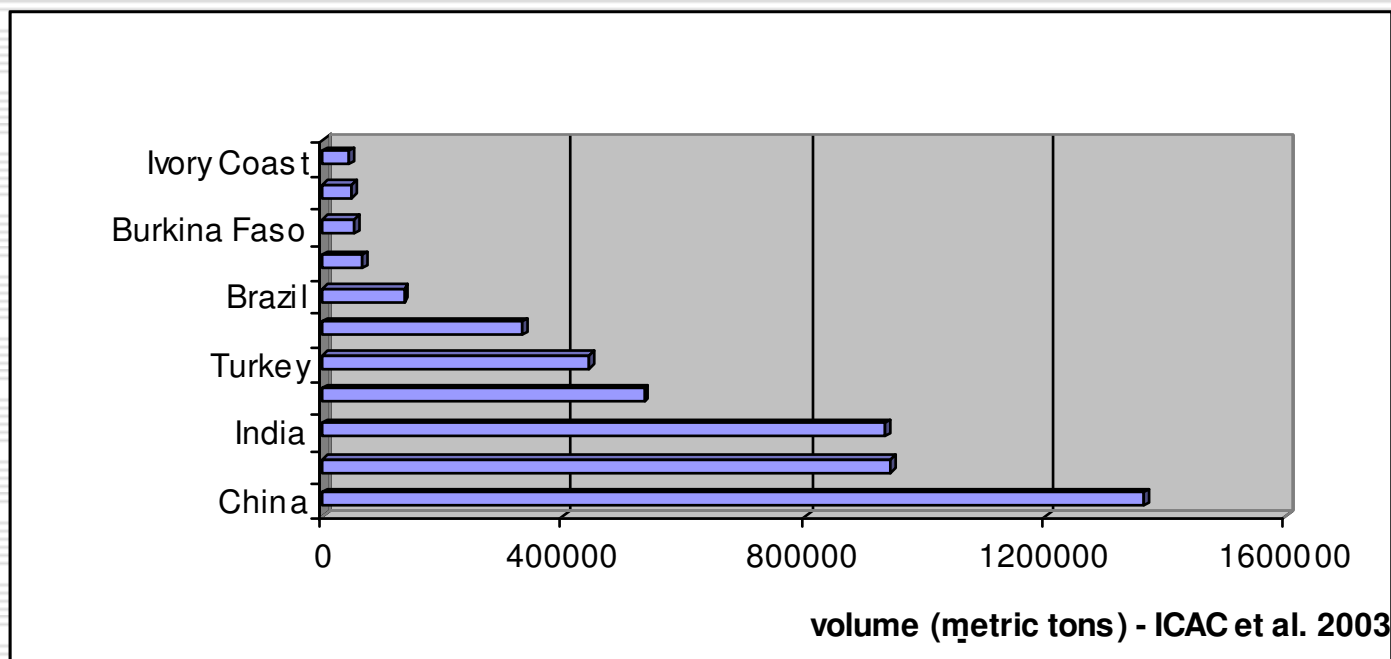


SOLIDARIDAD

Towards certified responsible biomass

Building concrete export cases meeting responsible supply criteria

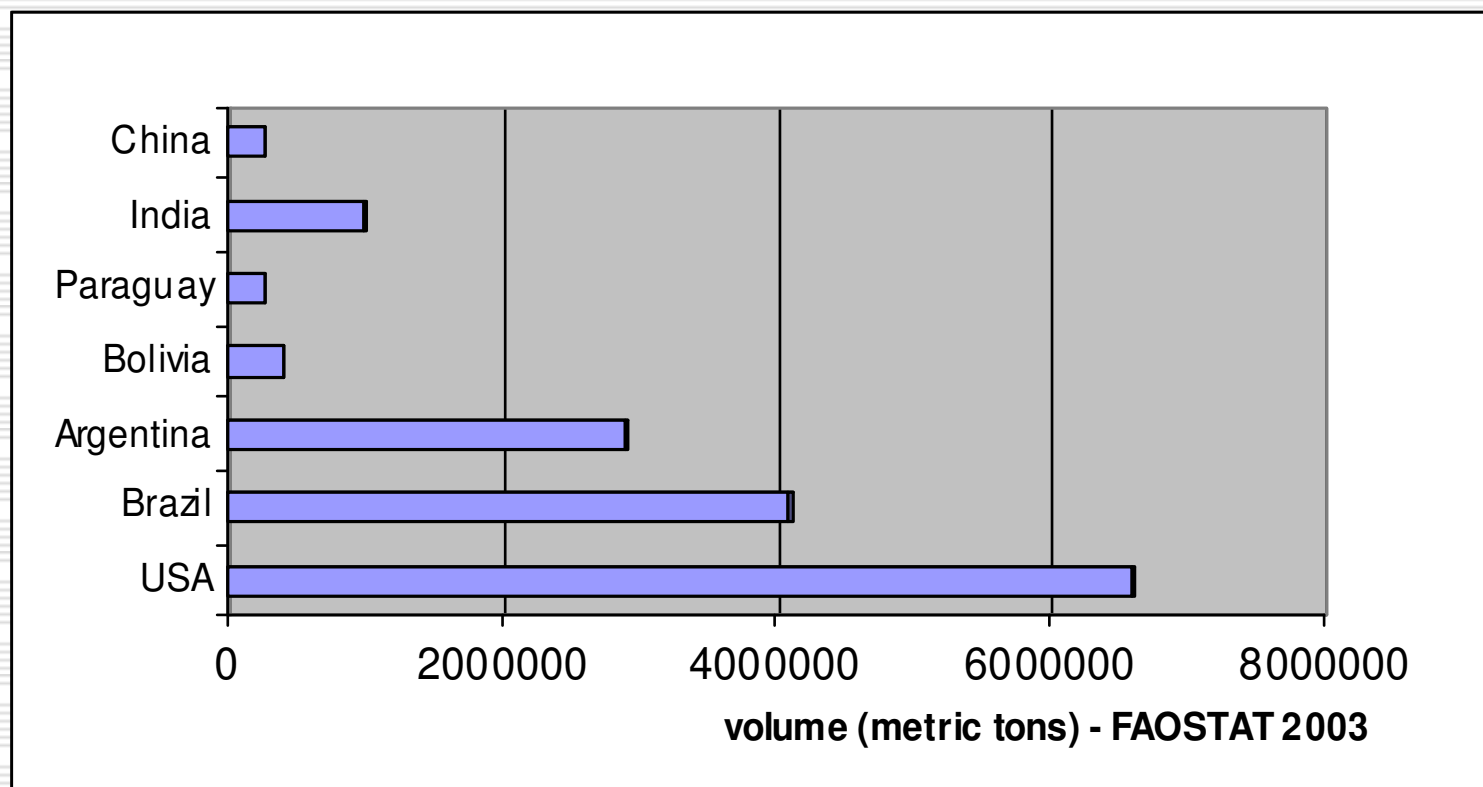
III.b Cotton: cake of seed



Towards certified responsible biomass

Building concrete export cases meeting responsible supply criteria

III.c Soy: hull

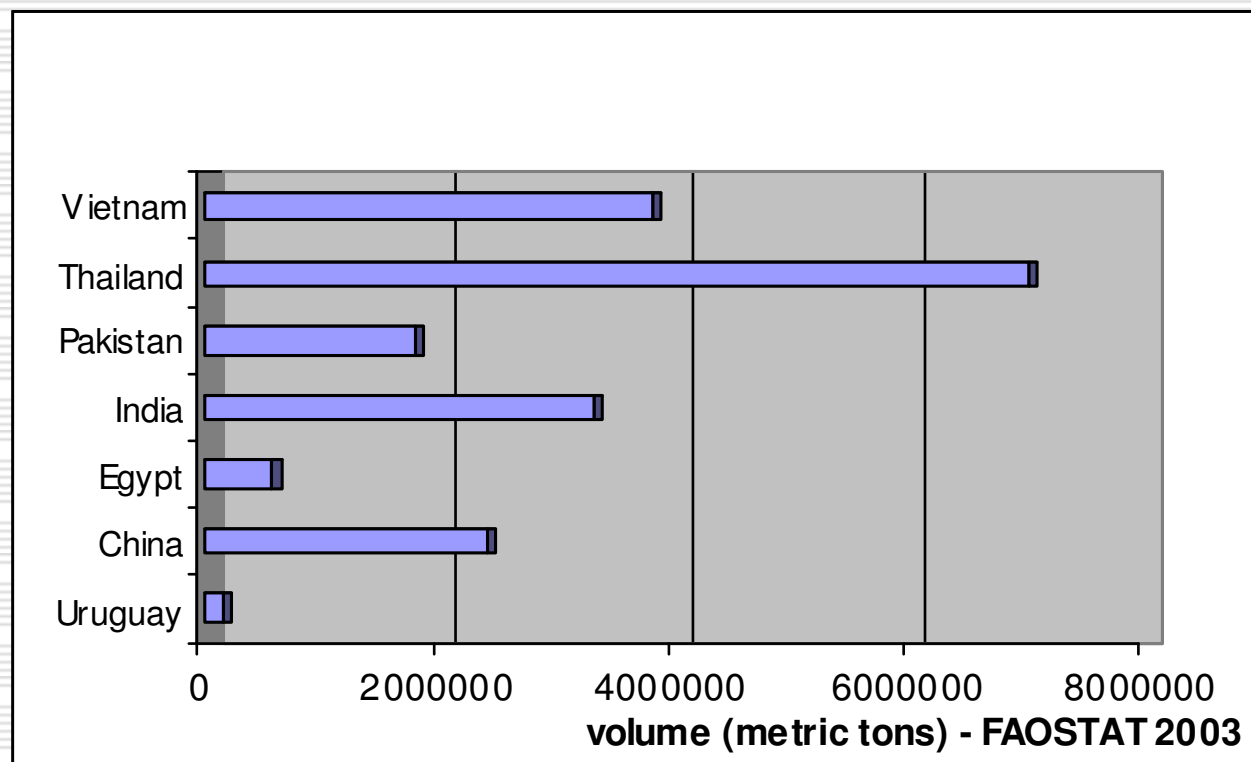


SOLIDARIDAD

Towards certified responsible biomass

Building concrete export cases meeting responsible supply criteria

III.d Rice: paddy hulls

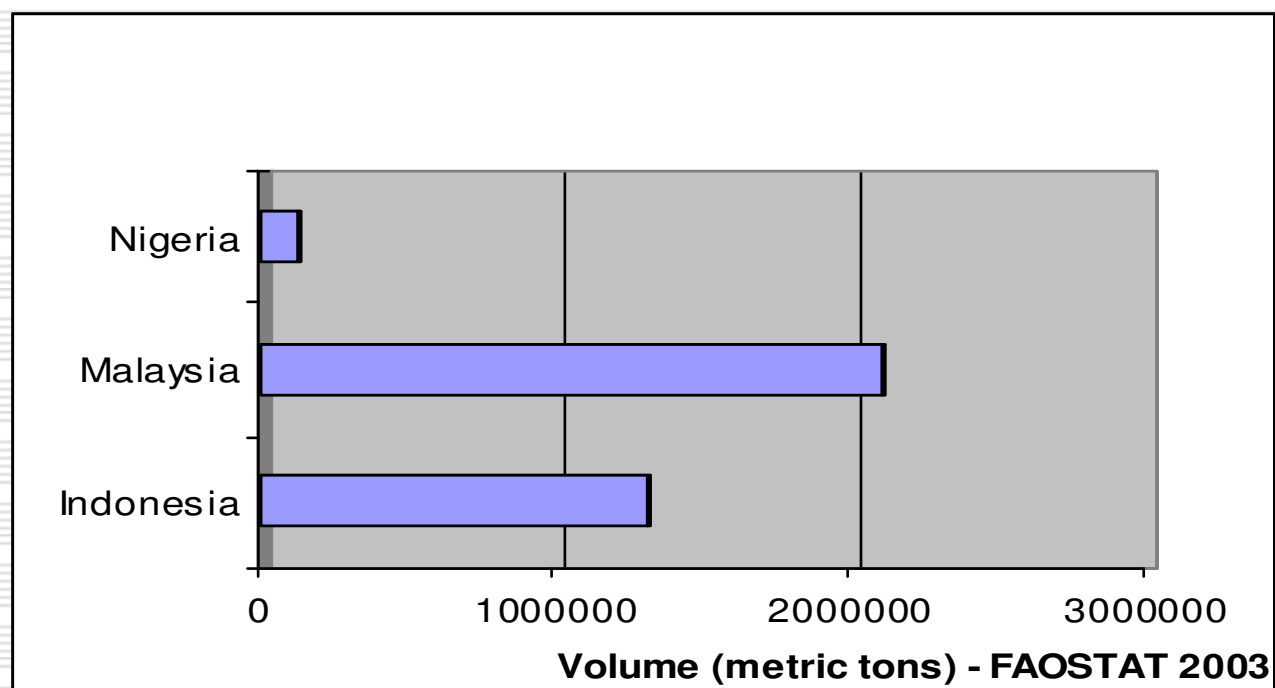


SOLIDARIDAD

Towards certified responsible biomass

Building concrete export cases meeting responsible supply criteria

III.e Palm: kernel cake



Towards certified responsible biomass

Building concrete export cases meeting responsible supply criteria

Possible barriers for certified responsible biomass

- Non-transparent chain relations
 - Economy of scale
 - No profitability
 - Unsustainable production of main crop; open nutrient cycles
 - Local food and water security & land use
 - Expansion into high value biodiversity areas
 - Other social and environmental off-farm effects
-
- *(Do we have good examples at all?)*

Towards certified responsible biomass

Building concrete export cases meeting responsible supply criteria

Challenges for certified responsible biomass

Certified responsible biomass could be a vehicle for:

- reduction of global warming
 - poverty reduction through high yields of cash crops
 - decent labour conditions for work force
 - diversifying agric sector from food chain to energy chain
 - consumer awareness raising
- *(Do we have a choice but developing good practices?)*

Towards certified responsible biomass

Building concrete export cases meeting responsible supply criteria

Solidaridad

